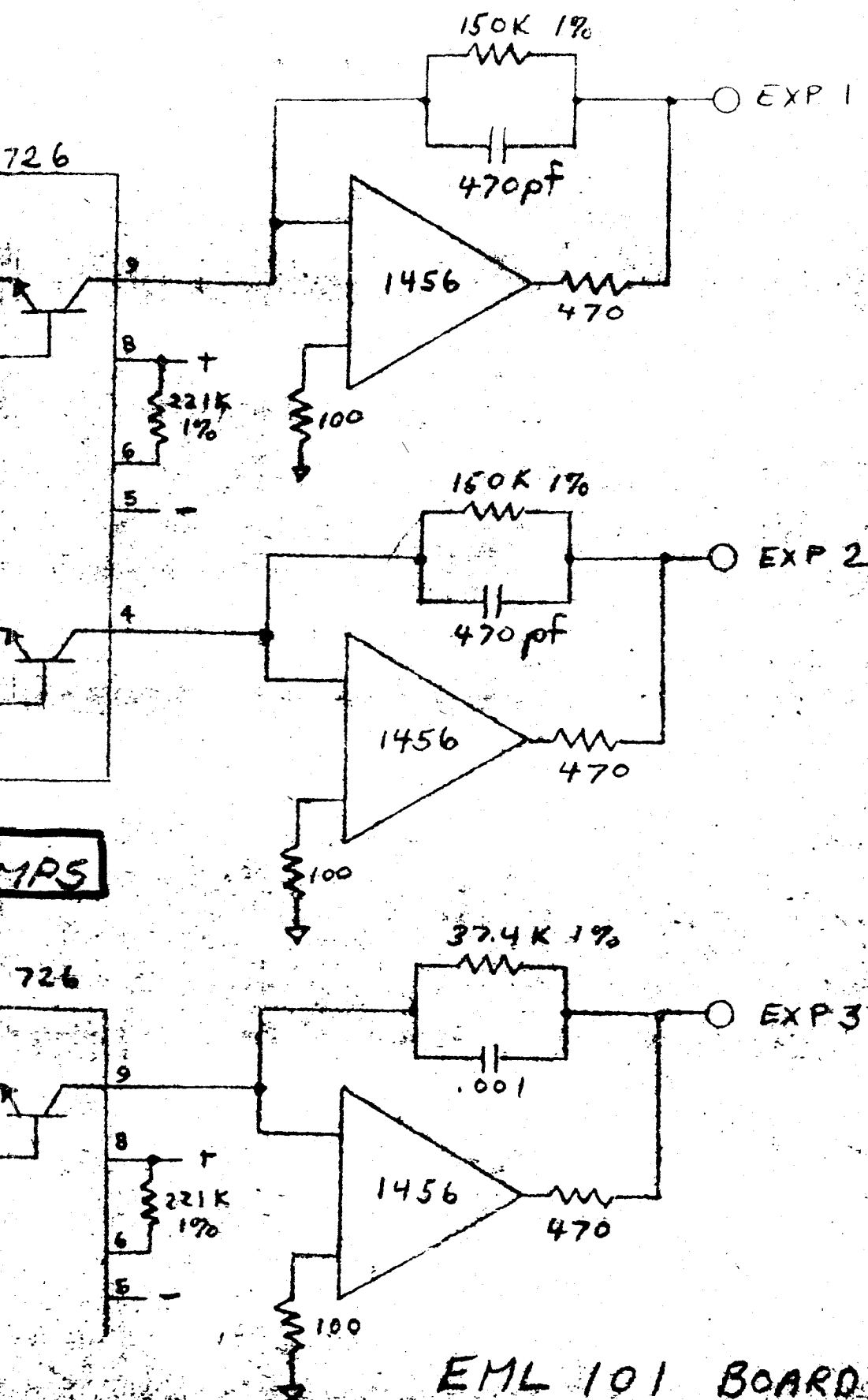
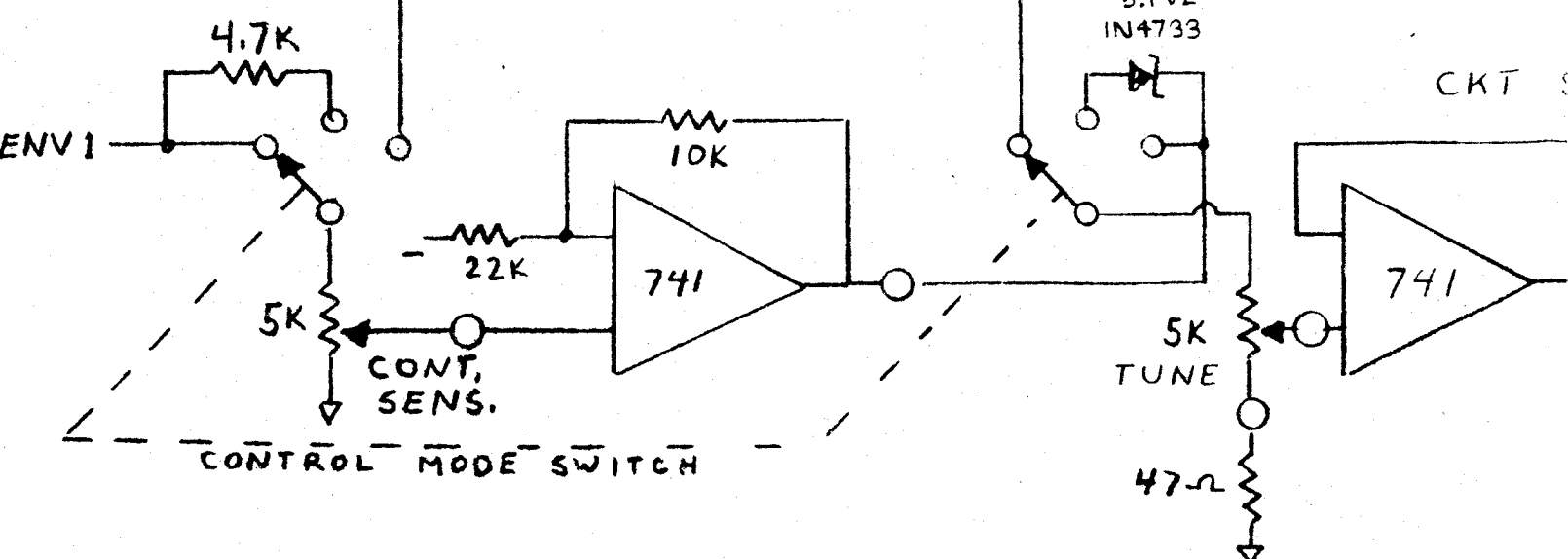
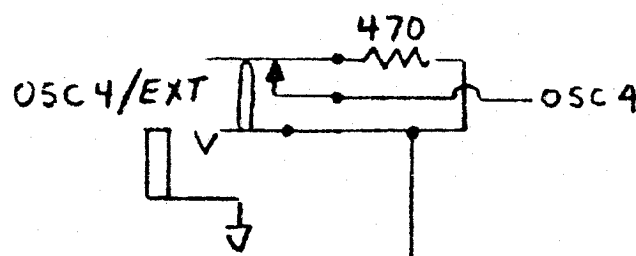
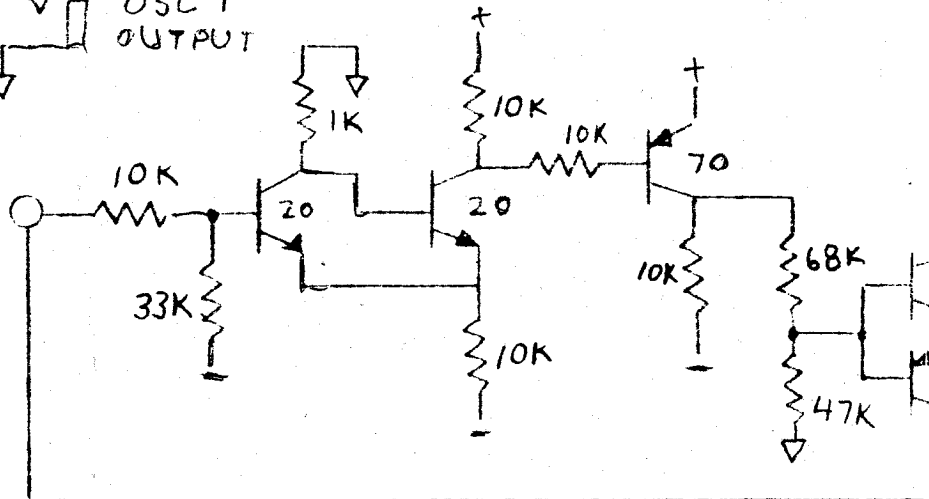
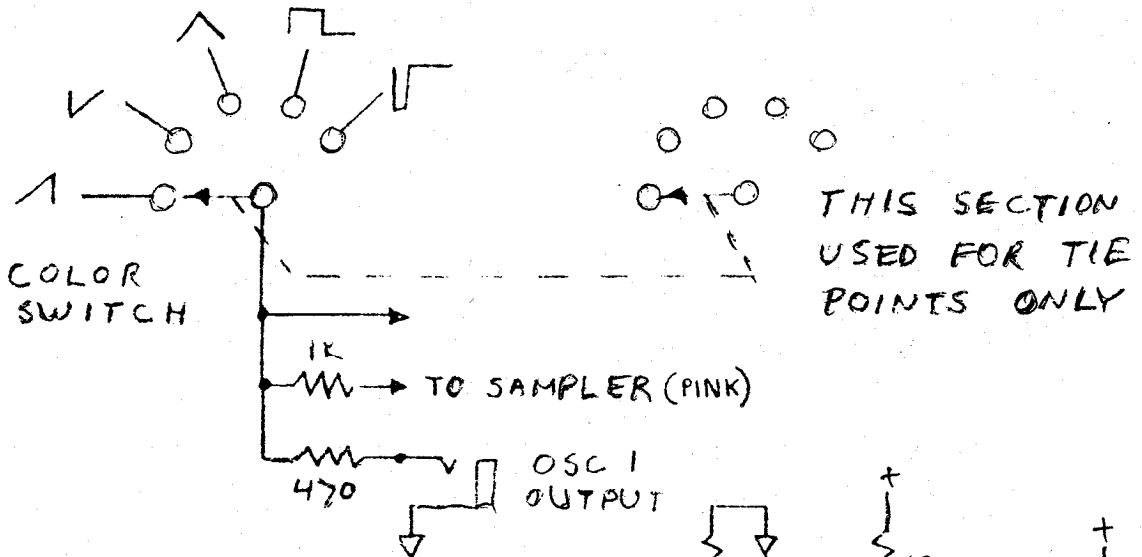


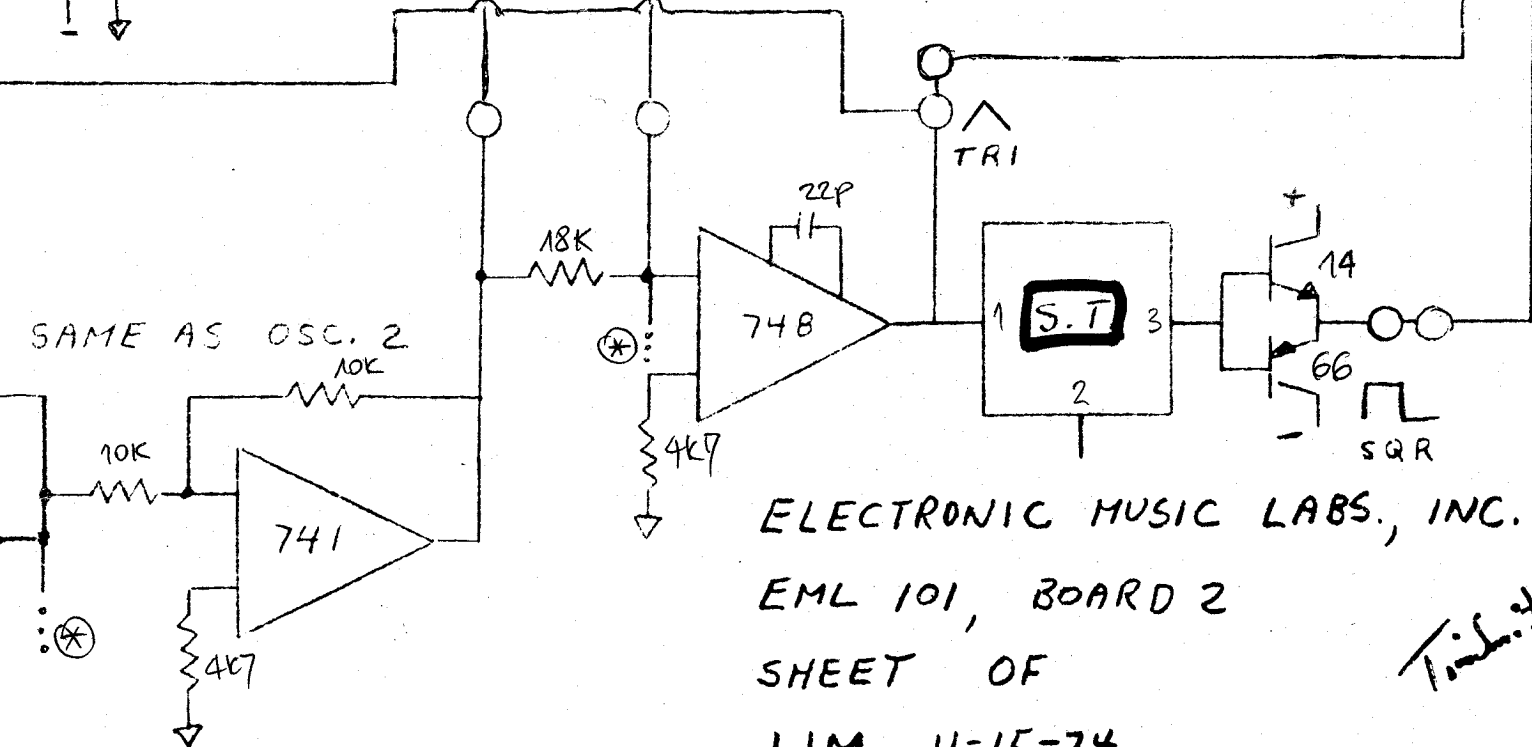
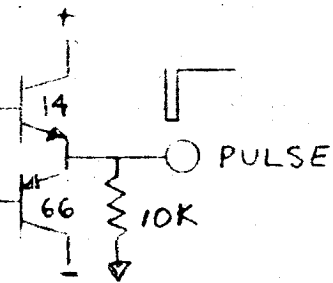
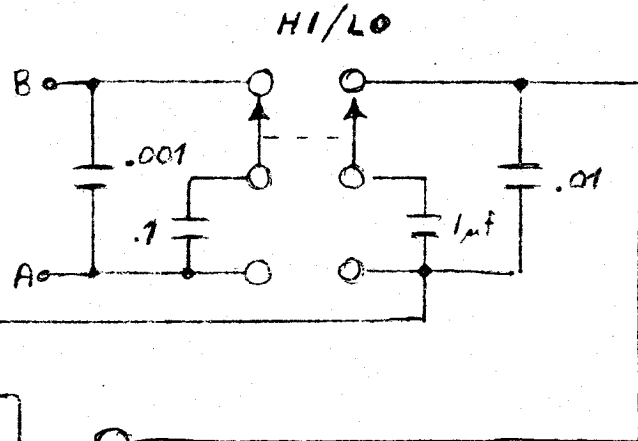
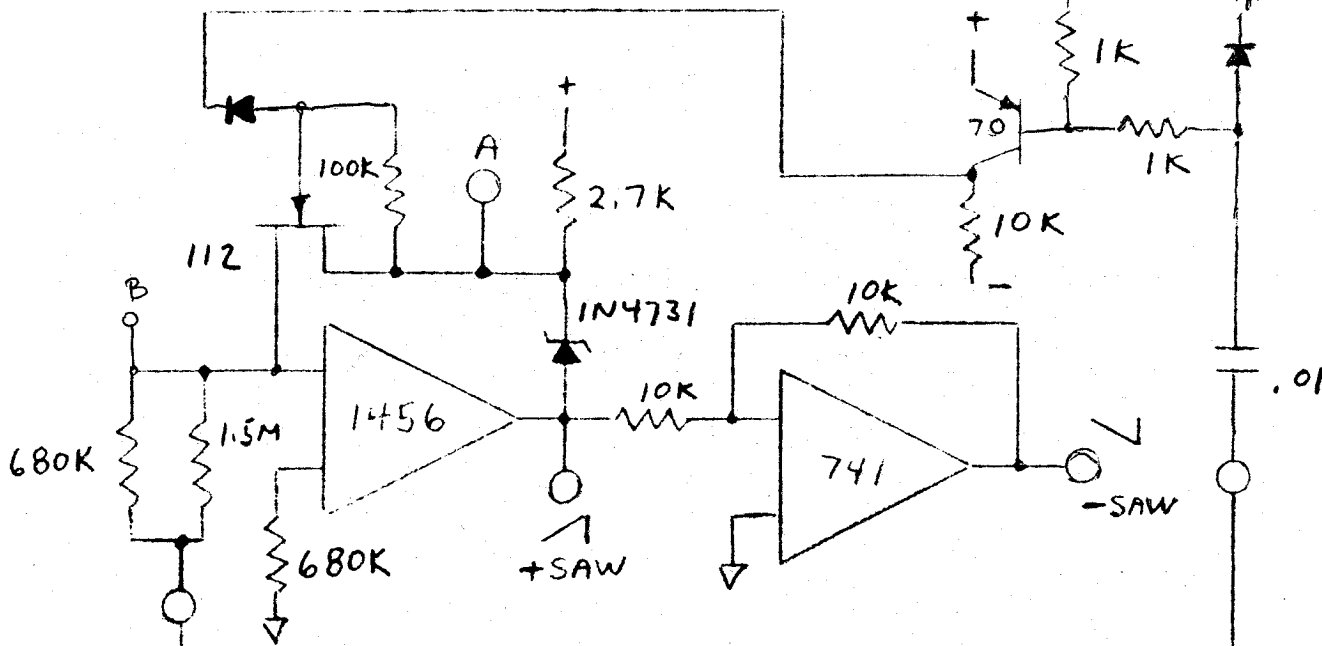
Tim Smith (3)



EML 701

OSCILLATOR NO. 1



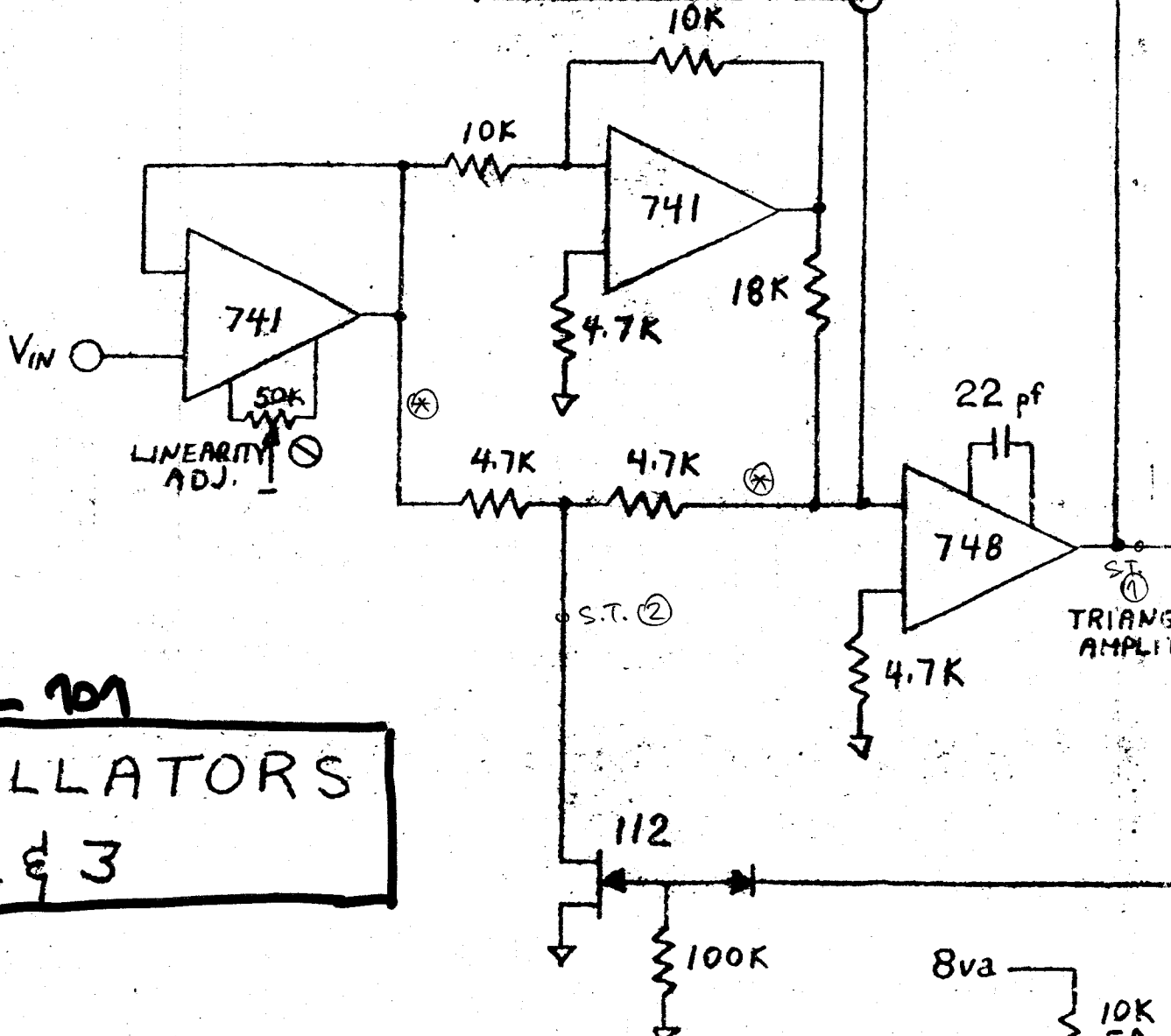
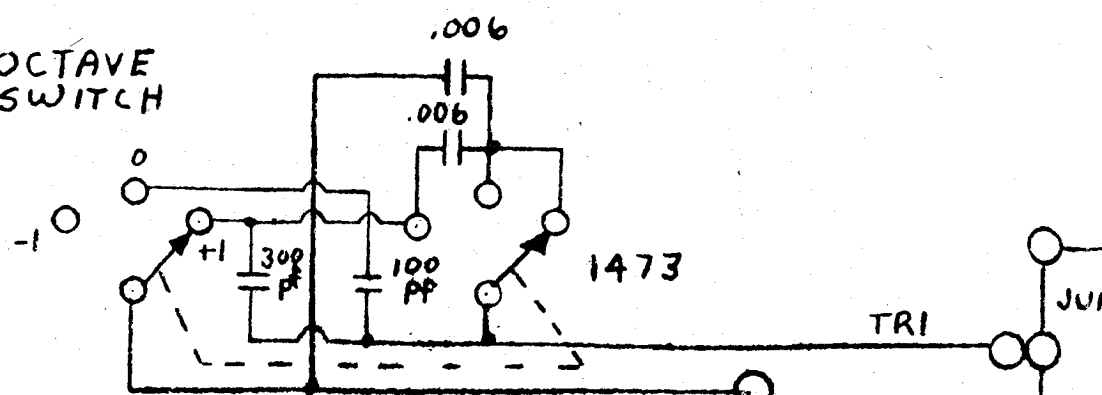


SAME AS OSC. 2

ELECTRONIC MUSIC LABS., INC.
 EML 101, BOARD 2
 SHEET OF
 JJM 11-15-74

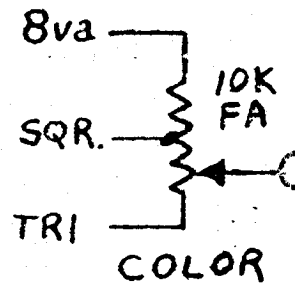
Timothy

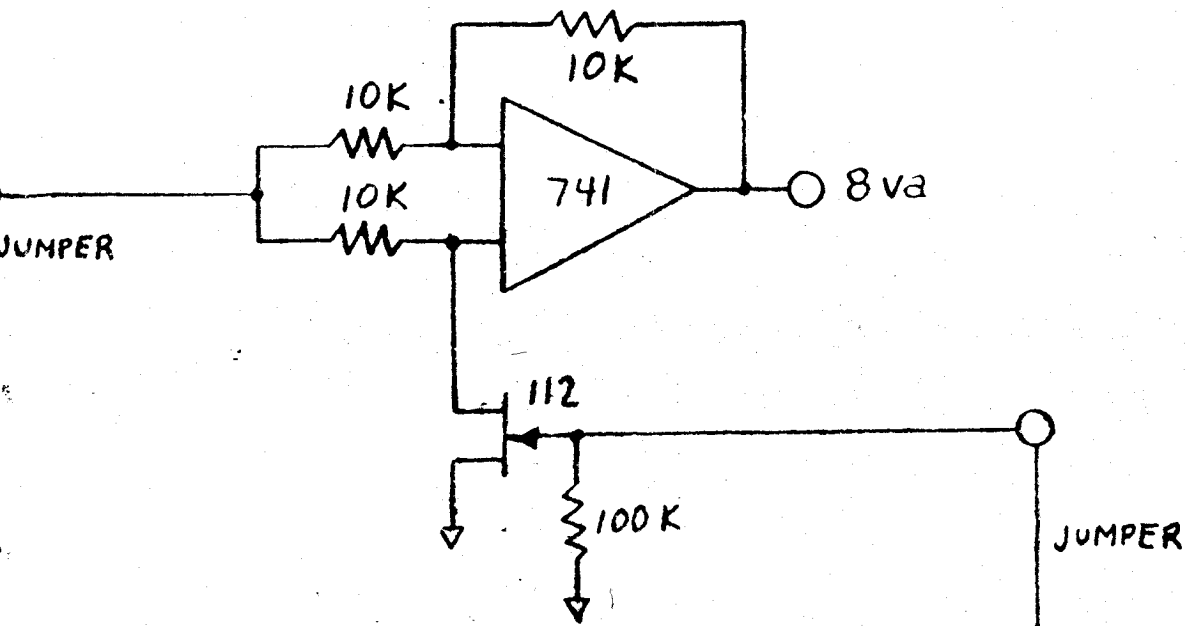
OCTAVE SWITCH



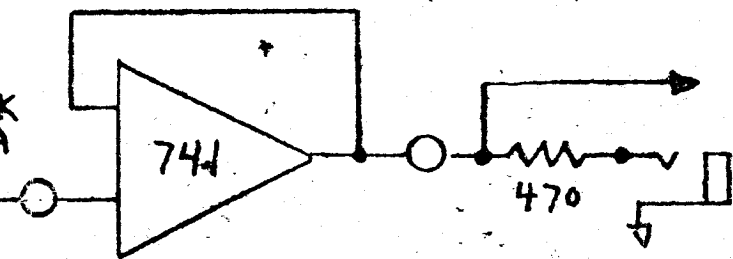
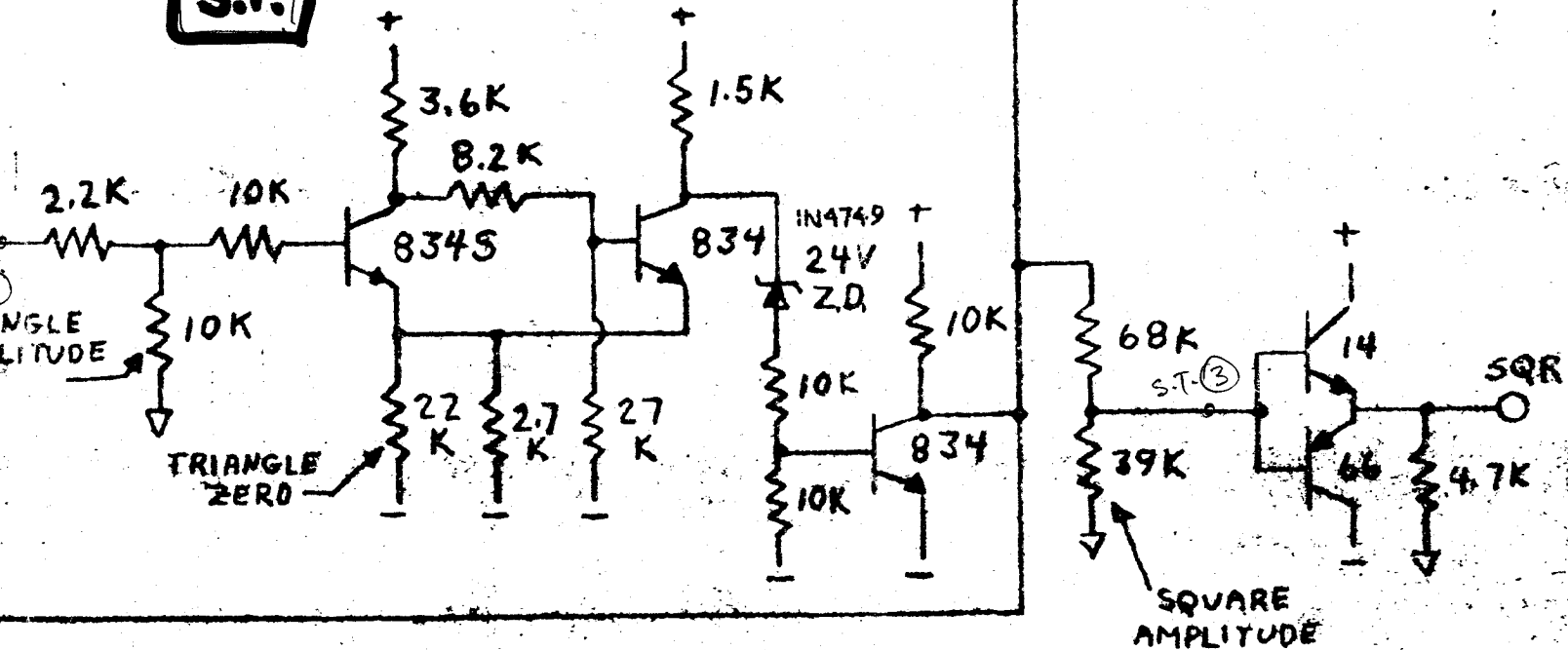
EML 101

OSCILLATORS
2 & 3



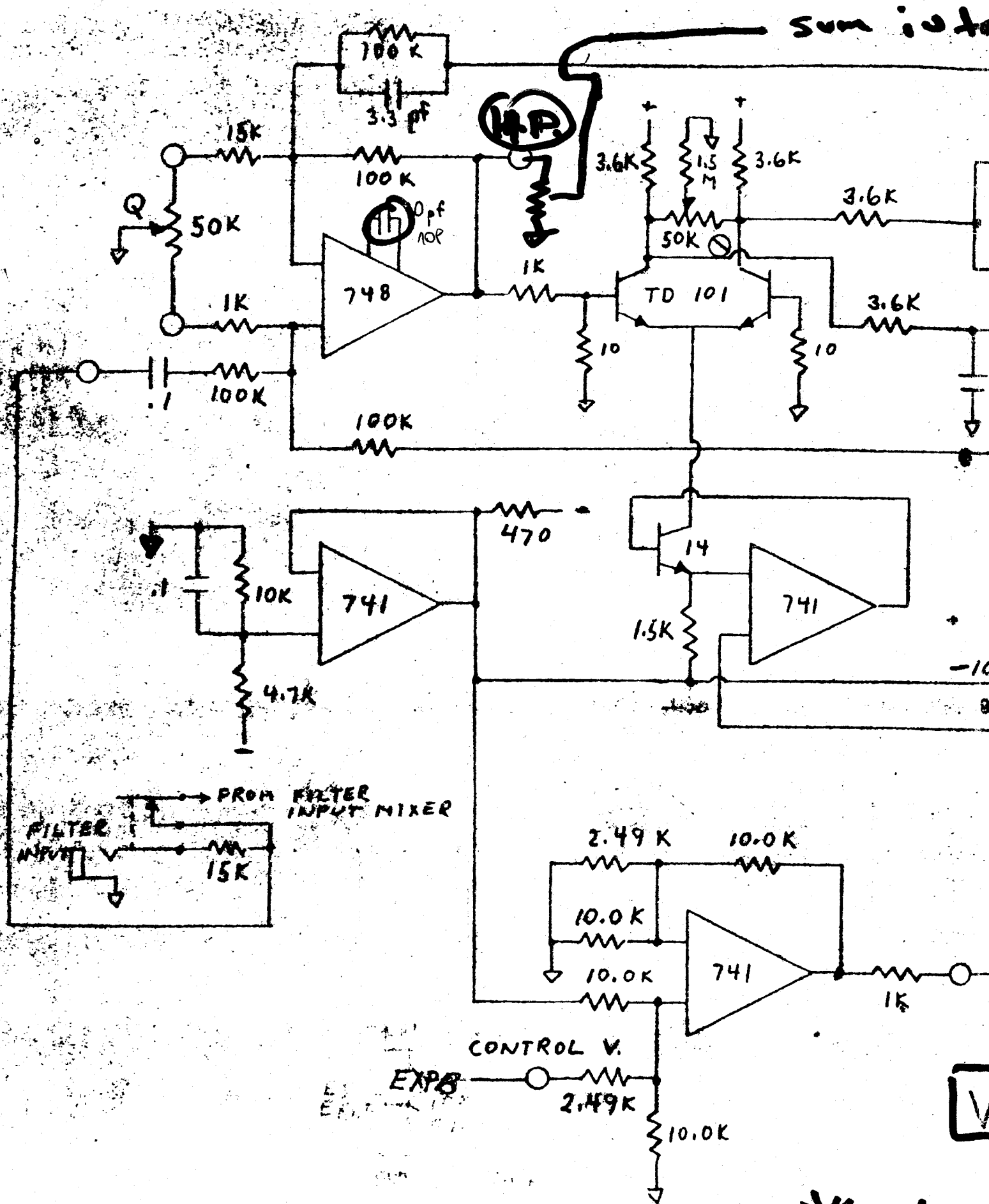


S.T.



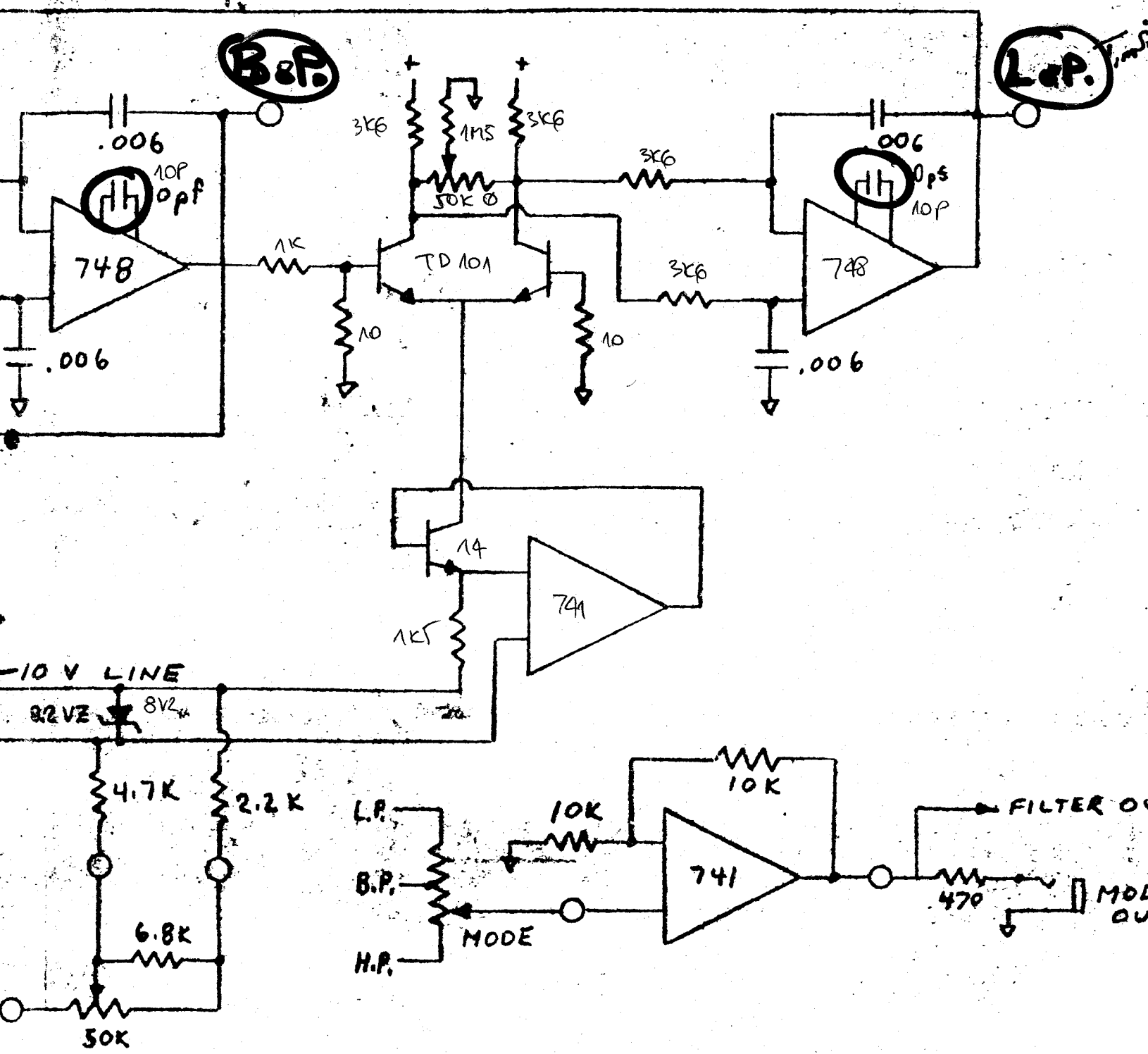
OSCILLATOR OUTPUT

ELECTRONIC MUSIC LABS, IN
 EML 101 , BOARD 2
 SHEET OF
 11-5-74 J.J.M.



* Change IC's to

NO VCA INPUT w/ 150K OR 50



B&P.

L&P.

-10V LINE

82VZ 8VZ

EML 101

VCF

use actual filter
351H or Equiv.

ELECTRONIC MUSIC LABS, INC.
EML 101, BOARD 3

SHEET OF
JJM 11-15-74